

## Soft, Thick Textures

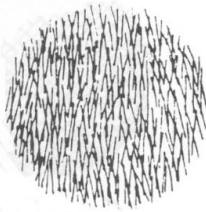
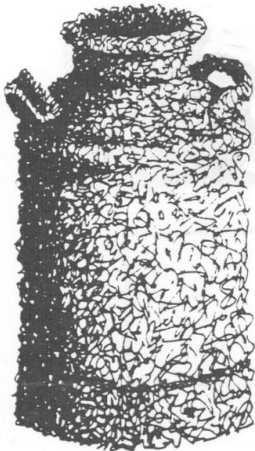
### Criss-Cross Lines

Criss-cross lines are semi-straight lines which "flow" in one general direction, overlapping unevenly, and if they are long enough, tending to cross themselves like X's now and again. They should be very loosely drawn to give a sketchy, natural appearance.

Criss-cross lines can give an object a velvety, hairlike or grass like texture depending on the length of the strokes.

When using criss-cross strokes to depict fur, one should stroke the lines in the same direction as the hair naturally grows. Not lifting the pen soon enough between strokes will result in "hooks" forming at the end of each of the criss-cross lines. This will give the hair a snagged, unkempt appearance and should be avoided.

Outlining the edge of fur, grass or thick, fluffy objects with a single "outline" can spoil the soft appearance and give an animal's coat the look of baldness.



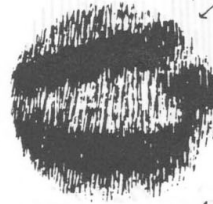
mown grass



tall grass



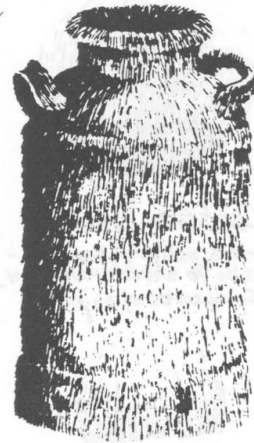
grass gone to seed



spotted fur

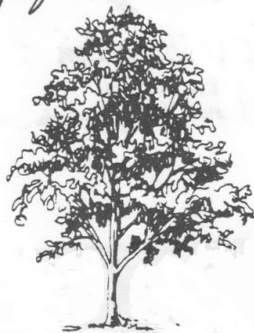


dappled fur

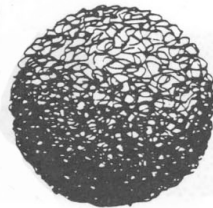
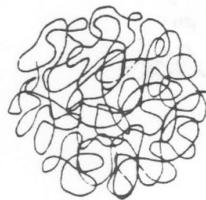


doe

short velvet-like hair



deciduous tree



### Scribble Lines

A scribble line is one that loops and twists about in a loose, whimsical manner. It may move in any direction and be as long or as short as desired!

Scribble lines are good to depict bushy, fuzzy, leafy or tangled textures. Thick, curly fur textures such as those found on sheep or poodles can be done easily using scribble lines.

# KOH-I-NOOR<sup>®</sup>

Koh-I-Noor Inc.  
100 North Street, P.O. Box 68, Bloomsbury, NJ 08804-0068  
(800) 877-3165 Telefax: (908) 479-4285